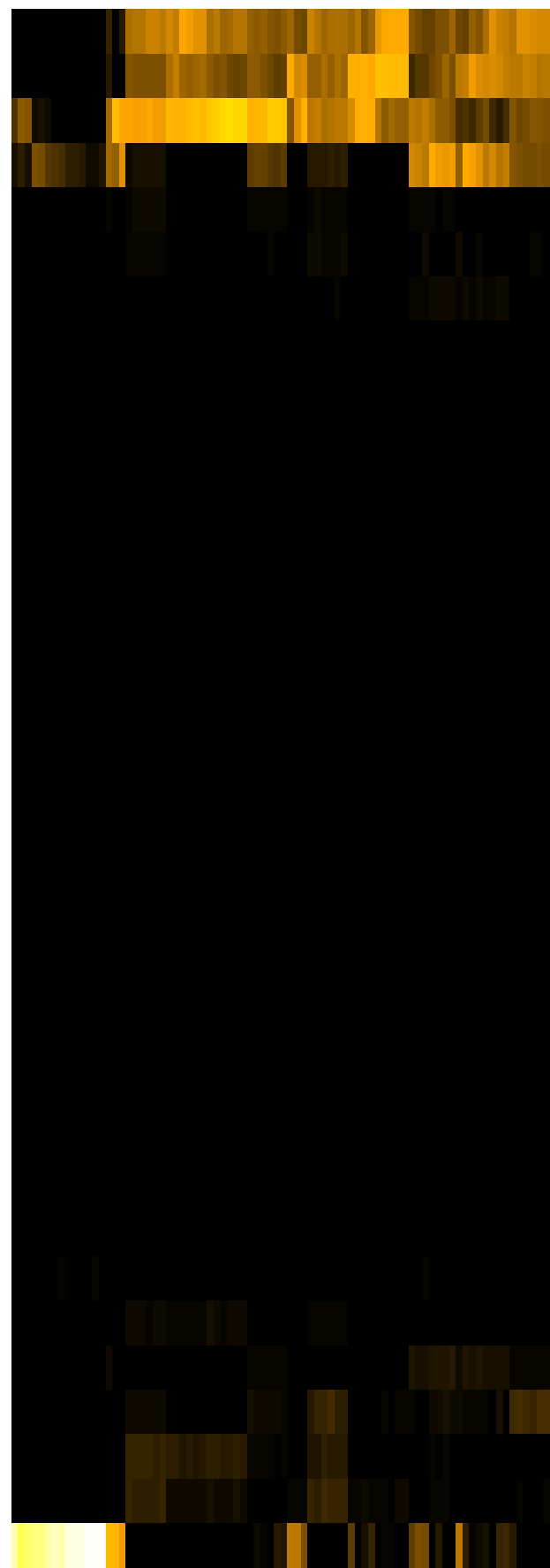
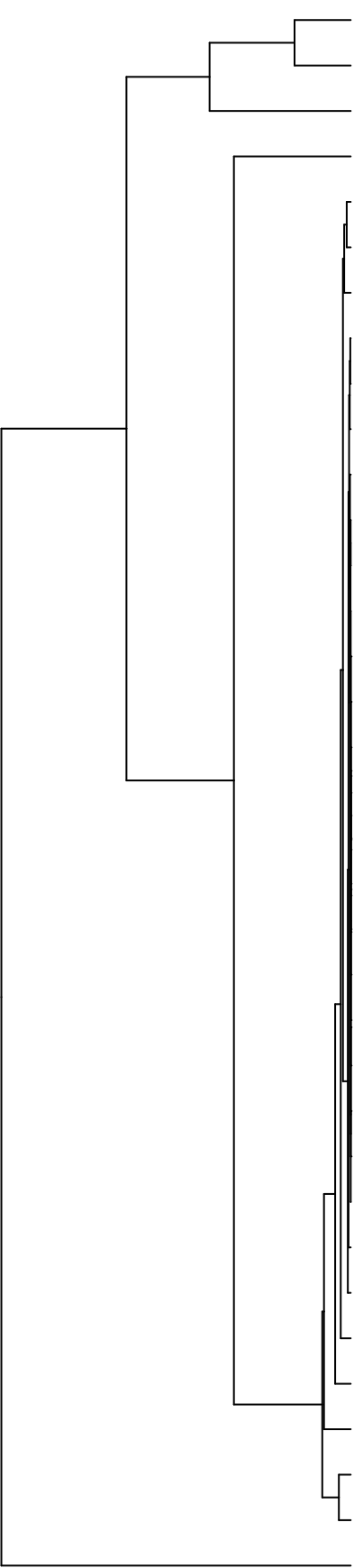


Group005  
 Baseline  
 Final B -PMA



- Pasteurellaceae
- Veillonellaceae
- Neisseriaceae
- Streptococcaceae
- Gemellaceae
- Micrococcaceae
- Actinomycetaceae
- Erysipelotrichaceae
- Saccharibacteria\_(TM7)\_[F-1]
- Lachnospiraceae
- Burkholderiaceae
- Atopobiaceae
- Absconditabacteria\_(SR1)\_[F-1]
- Flavobacteriaceae
- Sphingomonadaceae
- Mycobacteriaceae
- Pseudomonadaceae
- Yersiniaceae
- Comamonadaceae
- Microbacteriaceae
- Hymenobacteraceae
- Saccharibacteria\_(TM7)\_[F-2]
- Rhizobiaceae
- Phyllobacteriaceae
- Propionibacteriaceae
- Moraxellaceae
- Weeksellaceae
- Leptotrichiaceae
- Staphylococcaceae
- Prevotellaceae
- Carnobacteriaceae
- Fusobacteriaceae
- Campylobacteraceae
- Porphyromonadaceae
- Enterobacteriaceae

- F28914.S566
- F28914.S565
- F28914.S403
- F28914.S569
- F28914.S406
- F28914.S403
- F28914.S405
- F28914.S567
- F28914.S567
- F28914.S040
- F28914.S039
- F28914.S038
- F28914.S067
- F28914.S069
- F28914.S068
- F28914.S044
- F28914.S046
- F28914.S045
- F28914.S030
- F28914.S028
- F28914.S025
- F28914.S033
- F28914.S066
- F28914.S063
- F28914.S036
- F28914.S034
- F28914.S055
- F28914.S060
- F28914.S057
- F28914.S085
- F28914.S087
- F28914.S243
- F28914.S248
- F28914.S241
- F28914.S244
- F28914.S053
- F28914.S051
- F28914.S054

Family

Samples